

ANSWERS for MUSC 1119 Placement Test Sample Questions

1. Identify each of the following pitches in the space between the staves.

A musical staff with a treble clef and a key signature of one sharp (F#). The notes are: G# (first space), D-flat (second space), and A (third space). A second staff with a bass clef and a key signature of one sharp (F#) contains: E (first space), F# (second space), and E-flat (third space).

2. Add a single note to complete the following measure.

A musical staff in 3/4 time. The first measure contains three eighth notes: G4, A4, and B4. The second measure contains two eighth notes: C5 and D5, followed by a boxed eighth note.

3. Add a single rest to complete the following measure.

A musical staff in 2/2 time. The first measure contains a quarter note G4, followed by a triplet of eighth notes: A4, B4, and C5. The second measure contains a boxed eighth note.

4. Supply a single note value whose length is double that of the given rest.



5. Write out the following key signatures.

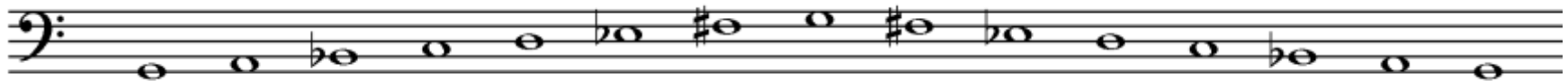


A major



C minor

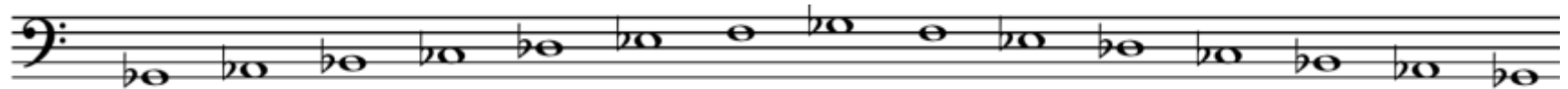
6. Write the G harmonic minor scale, ascending and descending, without using a key signature.



7. In the space below each staff, identify the following scales as specifically as possible.



C# harmonic minor



G-flat major

8. In the space below the lower staff, identify each of the following intervals by size and quality.



minor 6th major 6th

9. Complete each of the following intervals *above* the given note.

A musical staff with a treble clef and a bass clef. The first measure shows a whole note on the G line (G4) in the treble clef. The second measure shows a whole note on the F# line (F#4) in the bass clef. A box is drawn around the G note in the first measure, and another box is drawn around the F# note in the second measure.

minor third perfect fifth

10. Complete each of the following intervals *below* the given note.

A musical staff with a treble clef and a bass clef. The first measure shows a whole note on the G# line (G#4) in the treble clef. The second measure shows a whole note on the G line (G3) in the bass clef. A box is drawn around the G# note in the first measure, and another box is drawn around the G note in the second measure.

perfect fourth minor sixth

11. Write the following triads in root position.

A musical staff with a bass clef. Three triads are shown in root position, each enclosed in a box. The first triad has notes D2, F2, and A2. The second triad has notes Bb1, D2, and F2. The third triad has notes G#1, Bb1, and D2.

D minor

B-flat major

G-sharp diminished